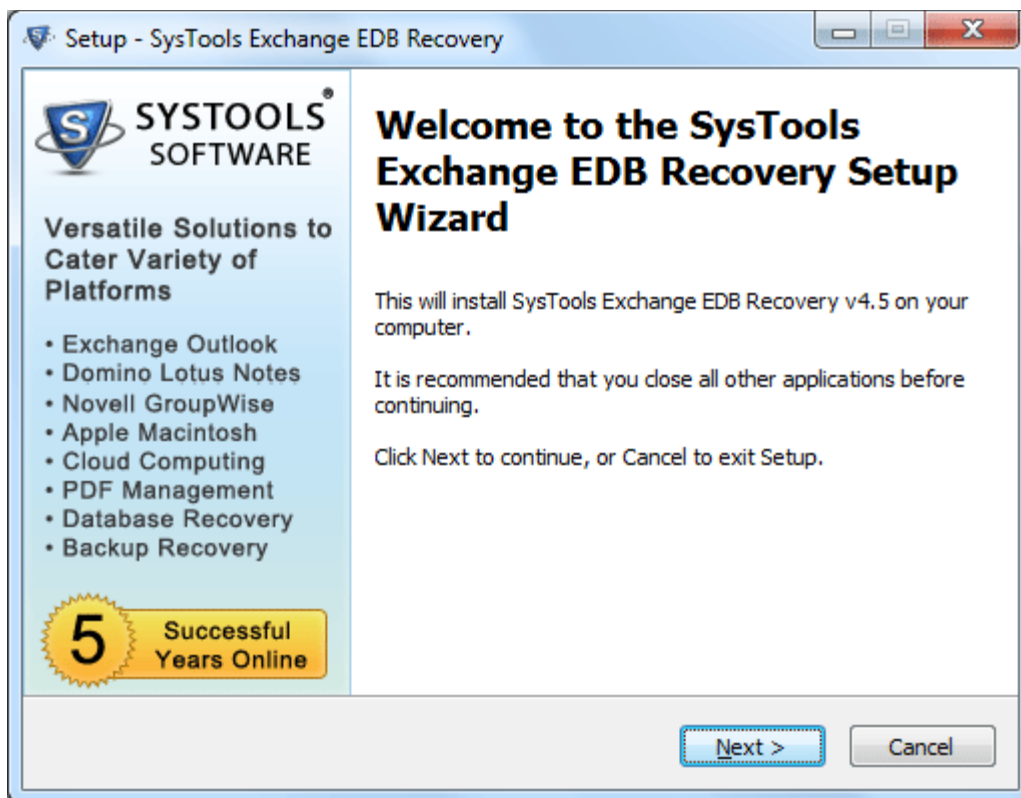


## Installation of SysTools Exchange Recovery

You can install **SysTools Exchange Recovery** properly on your computer system by performing the following steps:

- ✓ Download **SysTools Exchange Recovery** latest version from the website.
- ✓ Double click on downloaded **SysTools Exchange Recovery** (setup-exchange-recovery.exe). Click on the **Run** option.
- ✓ Once you will double click on set up, the setup will ask, ***Do you want to run this file*** and you have to click on **Run** to proceed in installation.
- ✓ After this, when you will click on **Run**, you will get welcomed in **SysTools Exchange Recovery** setup, you have to click on **Next** in that setup to proceed.



- ✓ After clicking on **Next**, the set up will offer you a License agreement and you have to **accept** that agreement to proceed. Once you will accept the agreement, the **Next** option will automatically get activated for you and you have to click on that to proceed.
- ✓ When you will click on **Next**, you will be asked to select destination location for installation of software. By default, the software will get installed on this location *C:\Program Files\SysTools Exchange Recovery* but, if you wish then, you can also select a different destination location by clicking on **Browse** button. *(Once you will select the destination location, you have to click on **Next** to proceed).*
- ✓ After doing this, you have to select the **Start Menu** Folder in which the shortcuts of program needs to be placed and click **Next**.
- ✓ After selection of Start Menu folder, the set up will ask you to perform Additional Tasks like **Creating Desktop Icon** or **Creating a Quick Launch Icon**. You have to perform additional tasks as per your need and proceed.
- ✓ After this, the set up will give you a message saying that software is ready to install on computer system. (You have to click on **Install** button in that Message Window to move to the last step of installation process).
- ✓ At last, you will get a confirmation message saying that setup process is complete, do you want to Launch **SysTools Exchange Recovery**. You have to click on **Finish** in that Message Window to launch the software successfully after installation.