

Introduction

- Overview
- System Requirements

Software Install and Uninstall

- Install SysTools OST Recovery
- Uninstall SysTools OST Recovery

Software Features and GUI

- Software Menu Options
- Software Navigation Options

Quick Getting Started Guide

Frequently Asked Questions

Purchase and Support

- Demo
- Purchase
- Support

Copyright

Trademark

License Agreement

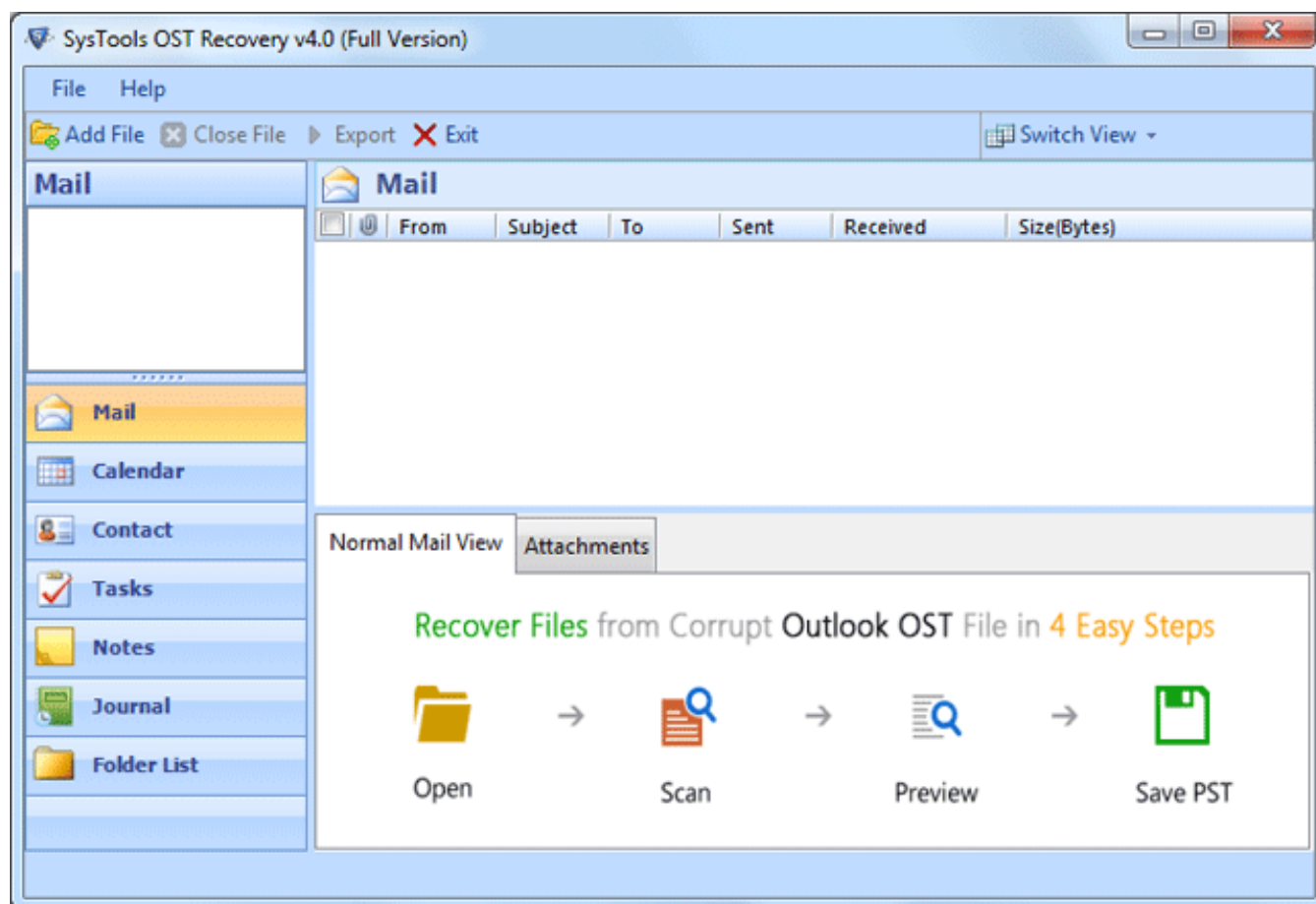
Disclaimer



SysTools OST Recovery

SysTools OST Recovery is a tool to recover corrupted OST files & convert **OST** in **PST, EML & MSG** file format. User can access their OST Mailbox items in Outlook as well as EML & MSG supported email clients like *Windows Mail Vista, Windows Live Mail, Outlook Express & Thunderbird*.

The Contacts, Calendars, To-do List, Notes etc. are also exported to EML, PST & MSG file type.



Along this help manual you will come to know about:

- Software Overview
- Minimum System Requirements to Run Software
- Software Features and GUI
- Quick Getting Started Guide

→ Software Purchase and Support



Welcome to SysTools OST Recovery

SysTools OST Recovery helps to recovers corrupted Offline Storage Tables (**OST**) and save them in PST, MSG & EML. The software execute flawless conversion of OST mail items (Calendar, Task, Journal, Contacts etc.) to EML, PST & MSG. The key features described below.

Key Features of SysTools OST Recovery

- Software recover corrupted OST file & convert in EML, MSG & PST file type.
- Items like Email, Task, Calendar, Contacts, Notes, Journal are also converted by OST recovery software.
- It offers naming convention to save EML & MSG emails.
- Easy installation of software is aided by support to all Windows Operating System.
- The software assures no alteration in email properties like To, Bcc, Cc etc.
- All Outlook email client versions are supported by **SysTools OST Recovery** software like; **2013 (32 bit & 64 bit), 2010 (32 Bit & 64 bit), 2007, 2003, 2002, 2000** etc.



System Requirements for SysTools OST Recovery:

For proper working of software, it's very necessary that it's all requirements should be fulfilled and below mentioned is list of some requirements that you need to fulfill to get proper results with this software.

Minimal System Software Specifications

- Windows XP
- Windows Vista
- Windows 7 (32-bit or 64-bit)

Additional Requirement

- MS Outlook (2013/2010/2007/2003/2002/2000/97) should be installed and it should not be connected with Exchange server

Basic Hardware Requirements

- **Processor** - 1 GHz processor (2.4 GHz is recommended)
- **Memory** - 1 GB RAM
- **Disk Space** - Around 7.5 MB for installation



Software as mentioned requires Windows PC platform for its execution. The installation of software requires some simple steps. User need to just move with the instructions given by the software.

Software requires no efforts on your part when comes to uninstall of same. Hassle free uninstall **SysTools OST Recovery** by commonly known Windows uninstall methodologies.

More to Come

- [Install SysTools OST Recovery](#)
- [Uninstall SysTools OST Recovery](#)



Installation of SysTools OST Recovery

You can install **SysTools OST Recovery** properly on your computer system by performing the following steps:

→ Download **SysTools OST Recovery** latest version from the website:
<http://www.systoolsgroup.com/ost-recovery.html>

→ Double click on downloaded **SysTools OST Recovery** (setup-outlook-ost-recovery.exe). Click on the **Run** option.

→ Once you will double click on set up, the setup will ask, **Do you want to run this file** and you have to click on **Run** to proceed in installation.

→ After this, when you will click on **Run**, you will get welcomed in **SysTools OST Recovery** setup, you have to click on **Next** in that setup to proceed.



→ After clicking on **Next**, the set up will offer you a License agreement and you have to **accept** that agreement to proceed. Once you will accept the agreement, the **Next** option will automatically get activated for you and you have to click on that to proceed.

→ When you will click on **Next**, you will be asked to select destination location for installation of software. By default, the software will get installed on this location `C:\Program Files\SysTools OST Recovery` but, if you wish then, you can also select a different destination location by clicking on **Browse** button. (Once you will select the destination location, you have to click on **Next** to proceed).

→ After doing this, you have to select the **Start Menu** Folder in which the shortcuts of program needs to be placed and click **Next**.

→ After selection of Start Menu folder, the set up will ask you to perform Additional Tasks like **Creating Desktop Icon** or **Creating a Quick Launch Icon**. You have to perform additional tasks as per your need and proceed.

→ After this, the set up will give you a message saying that software is ready to install on computer system. (You have to click on **Install** button in that Message Window to move to the last step of installation process)

→ At last, you will get a confirmation message saying that setup process is complete, do you want to Launch **SysTools OST Recovery**. You have to click on **Finish** in that Message Window to launch the

software successfully after installation.



Un-Installation of SysTools OST Recovery Software

You can uninstall SysTools OST Recovery software in two ways:

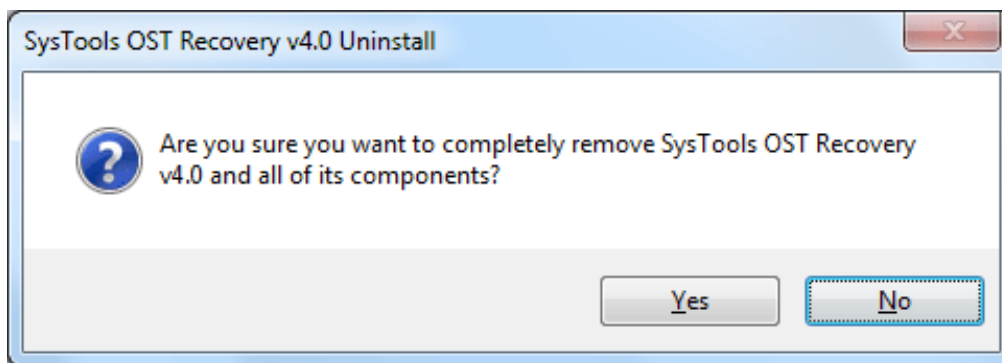
- From the Windows Start menu
- From the Control Panel

Important Note: To uninstall the software, first make sure that SysTools OST Recovery is not running in the background.

Uninstall using Windows Start menu

Click **Start** button from the Windows menu. Click **All Programs » SysTools OST Recovery » Uninstall SysTools OST Recovery**.

→ A **Warning message** before un-installing will be displayed on the screen. Click **Yes** to uninstall the software:



→ After this step, **SysTools OST Recovery** Software setup will start the process of *uninstalling* the software from the computer system.

→ After this **SysTools OST Recovery** Software will be successfully *uninstalled* from the computer system. Click on **OK** to close the window.

Uninstall Using Control Panel

→ Another alternative described here for software uninstall is through Windows **Control Panel** which holds and maintains all system settings. This alternative is described here just for sake of

completeness. You can easily skip this step if done with prior uninstall process.

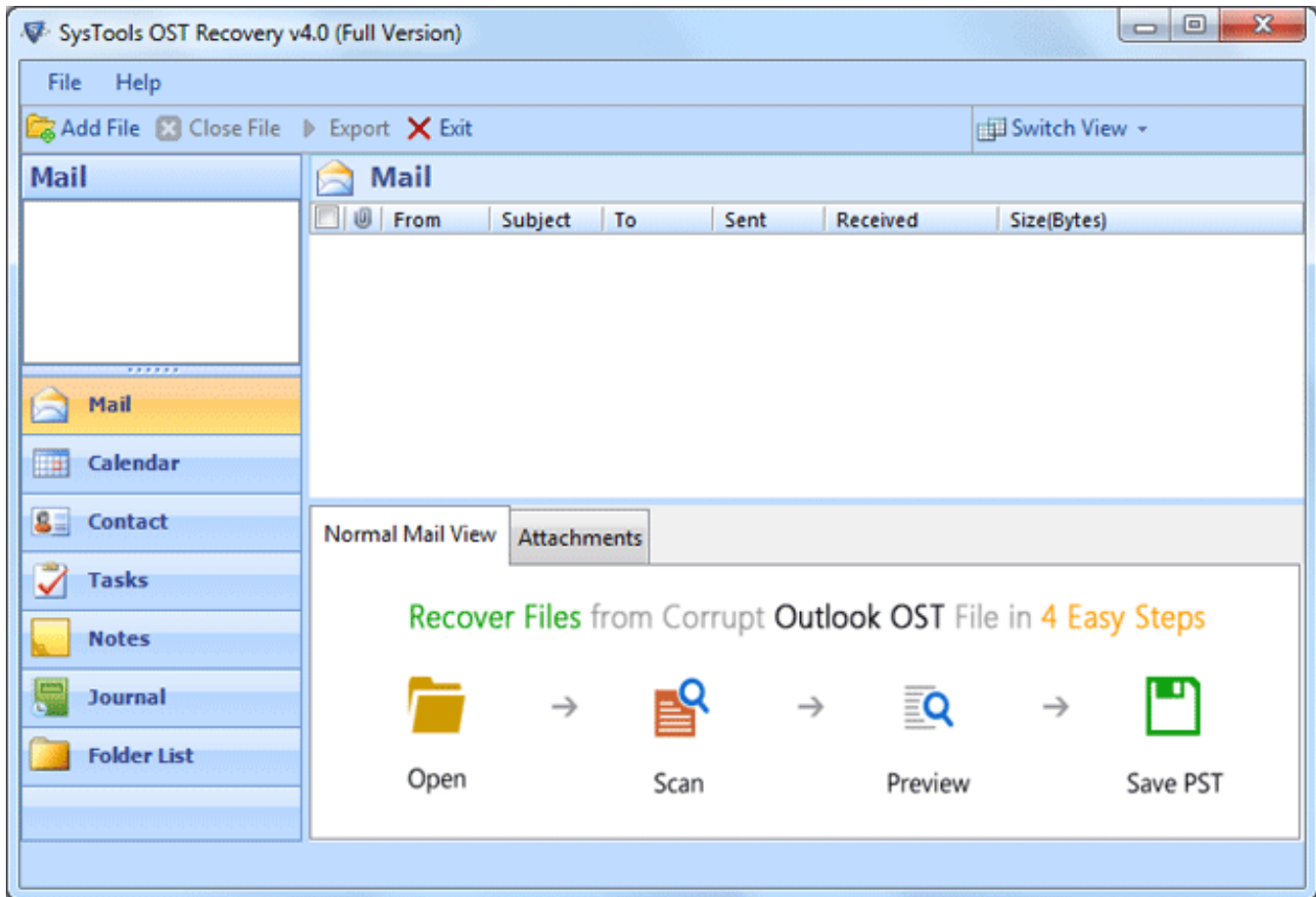
→ Click **Start** and look for **Control Panel** in start menu appears before you. Find **Add and Remove Programs** within **Control Panel**. **Add and Remove Program** generates comprehensive listing of all binaries presently installed on Windows. Find out **SysTools OST Recovery** and double click on it to start with it's uninstall procedures.

→ Software prompts you either you like to **remove SysTools OST Recovery** and all of its related components. Go for **Yes**.

→ Click **OK** to message describing successful uninstall of **SysTools OST Recovery**.



The User Interface of the **SysTools OST Recovery** Software looks like the below screenshot. You can visualize the steps of conversion of OST File into other file types like EML, PST & MSG.



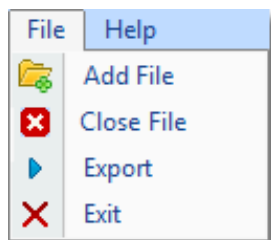
More to Come

- Software Menu Options
- Software Navigation Options



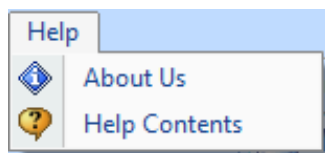
The first menu bar from top consist Software menu options. **SysTools OST Recovery** consists of two menus which are divided into several other menu items, are explained below:

File Menu



Option	Description
Add File	Add Outlook OST File
Close	Closes the Current OST file
Export	Start the Conversion Process from OST to PST, EML & MSG
Exit	Closes the Application

Help Menu

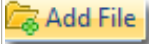
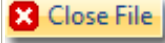




Option	Description
About Us	Displays the Contact & other details of SysTools Product
Help Content	Open Help Manual of SysTools OST Recovery



The software has direct Navigation options which let you perform operations directly, like:

- Add File
- Close File
- Export
- Exit

Option	Description
 Add File	Add Outlook OST File
 Close File	Closes the current OST File
 Export	Start the Conversion Process from OST to PST, EML & MSG
 Exit	Closes the Application

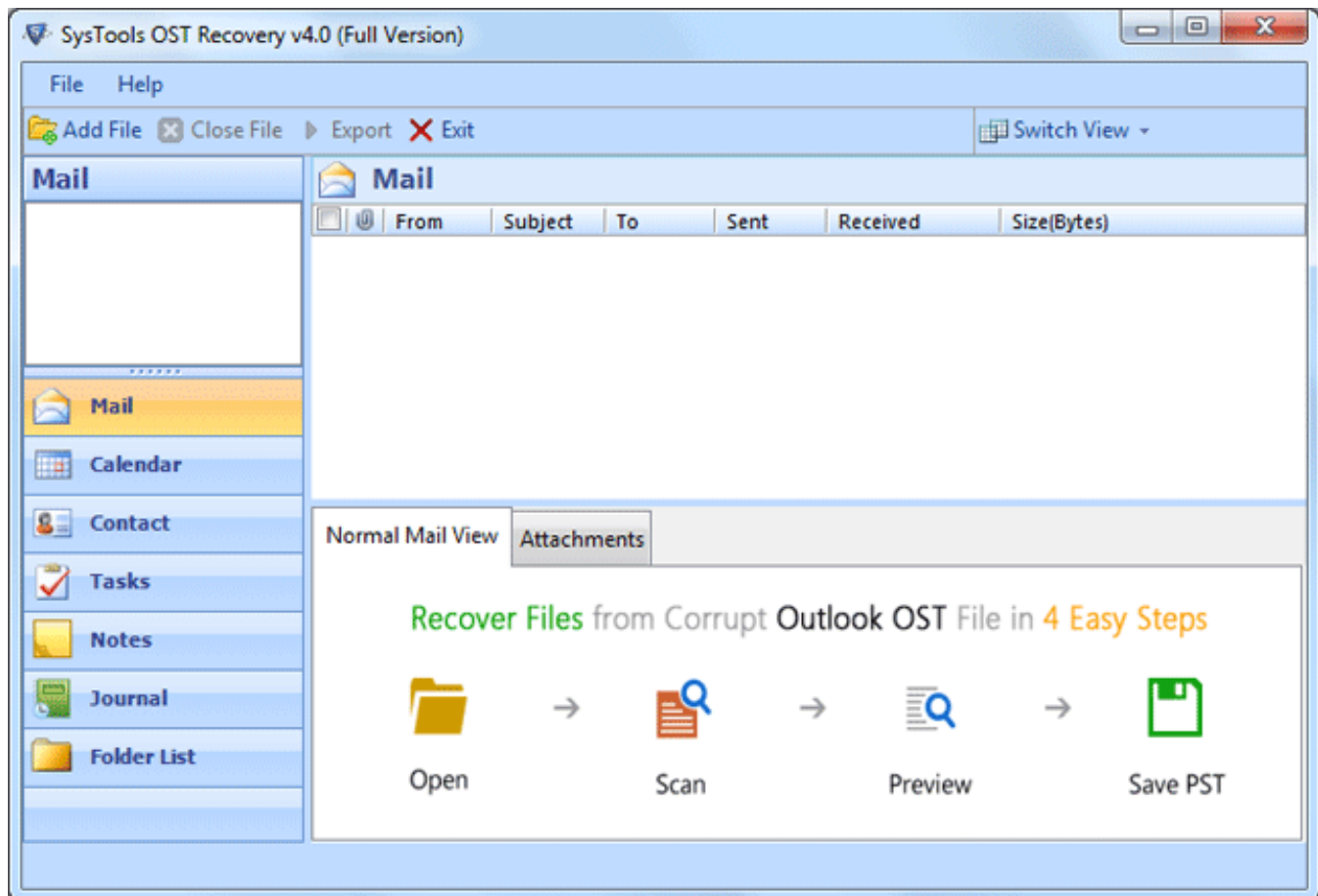


SysTools OST Recovery software helps user to convert OST to PST, extracting the inaccessible data from the selected OST file. User can save the recovered data in PST, EML and MSG format in the desired location. Below mentioned are the steps and screen shots exhibited by the SysTools OST Recovery software.

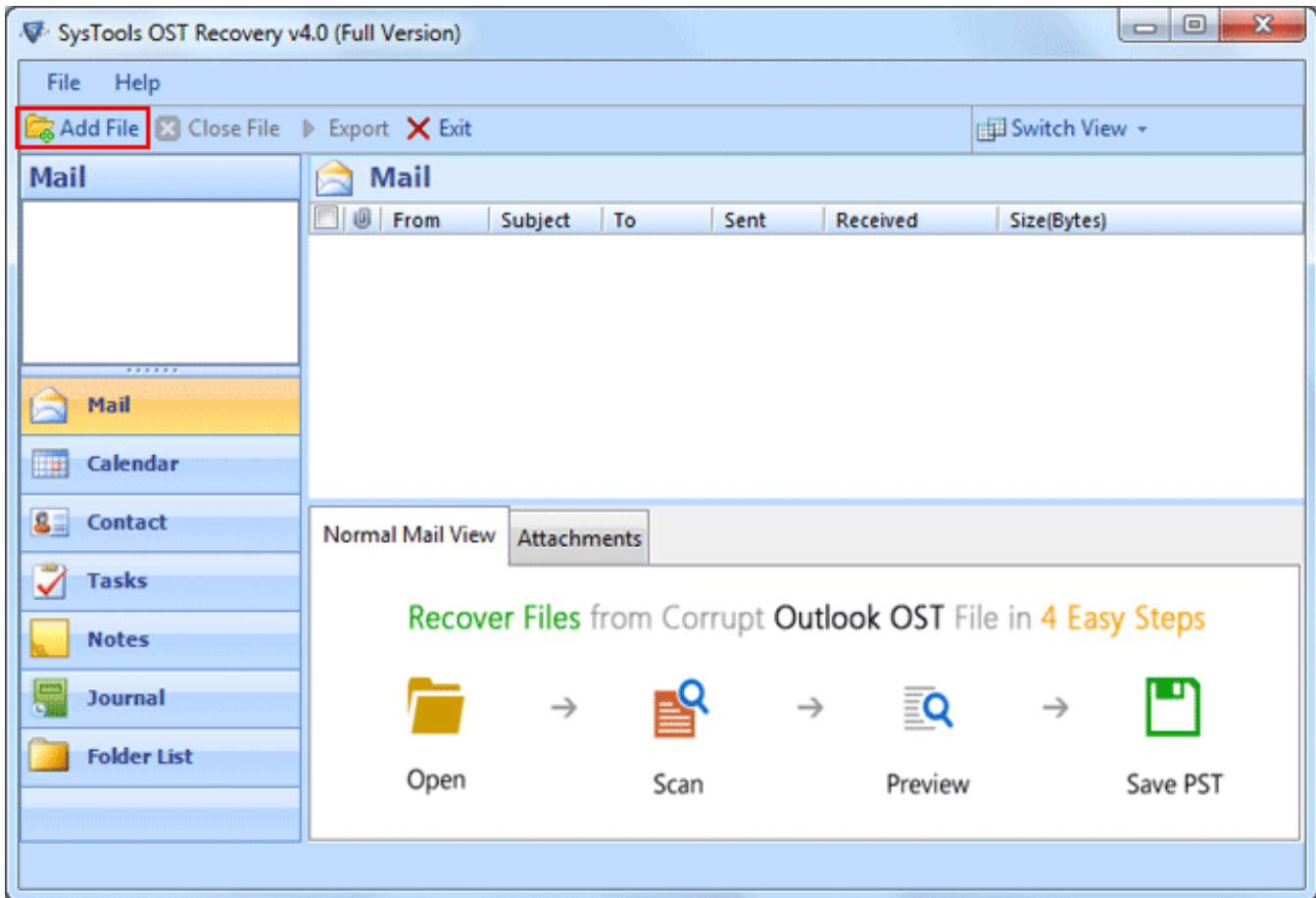
Steps to Recover OST file

Download the software, install it and to run it follow the path as:

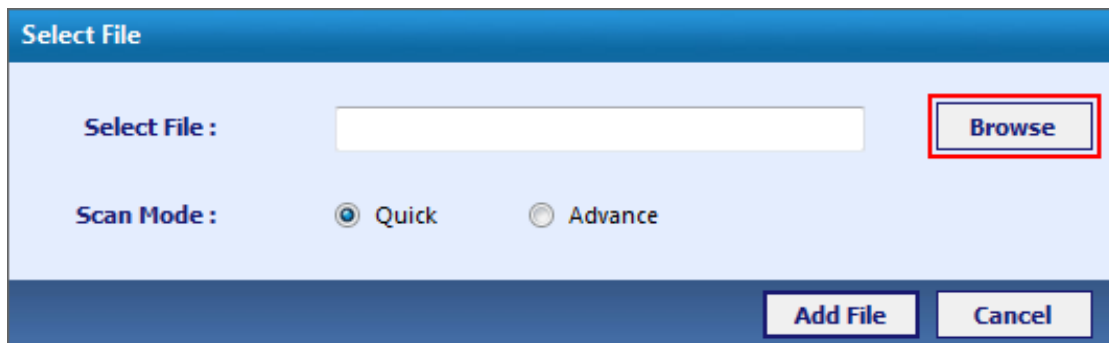
- Go to **Start » All Programs » SysTools OST Recovery » SysTools OST Recovery**. First window of the software appears as shown below:



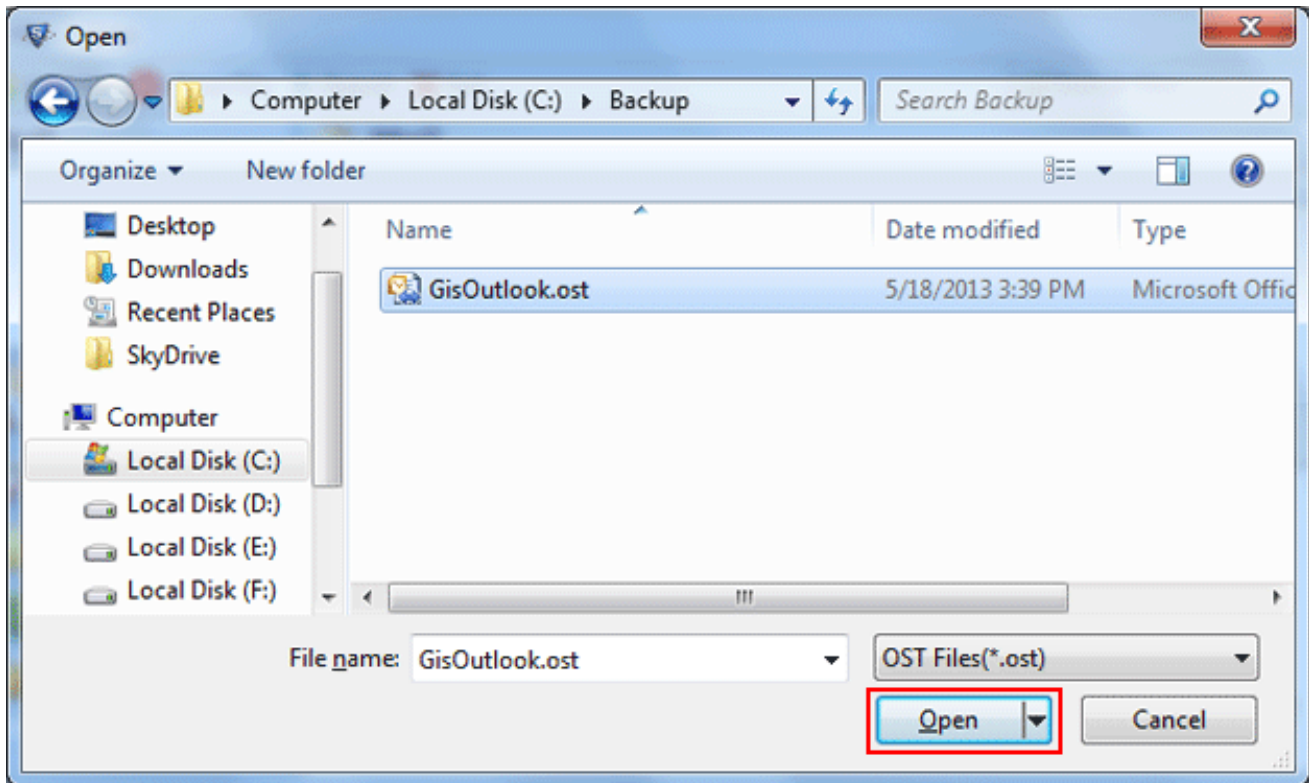
- Select **Add File** option to add OST file to the tool, by browsing it from the location where it is stored:



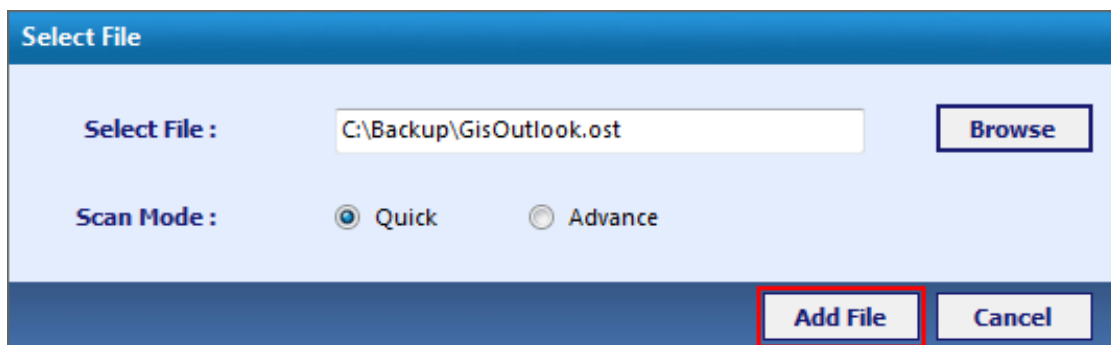
- Select the **Browse** button to add OST file from the location where it is stored in the system:



- Confirm the selection of OST file and then click **Open** to load the file:

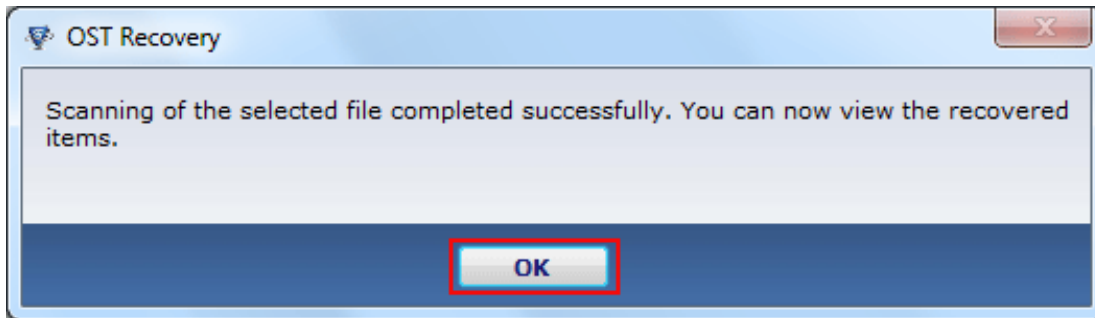


- Once the file is selected, the file path will be displayed and then move to select the scanning mode from the options displayed as:
 - **Quick Mode**: For normal scanning to be carried out in a quick mode
 - **Advance Mode**: Select advance scanning mode for highly corrupted OST file.

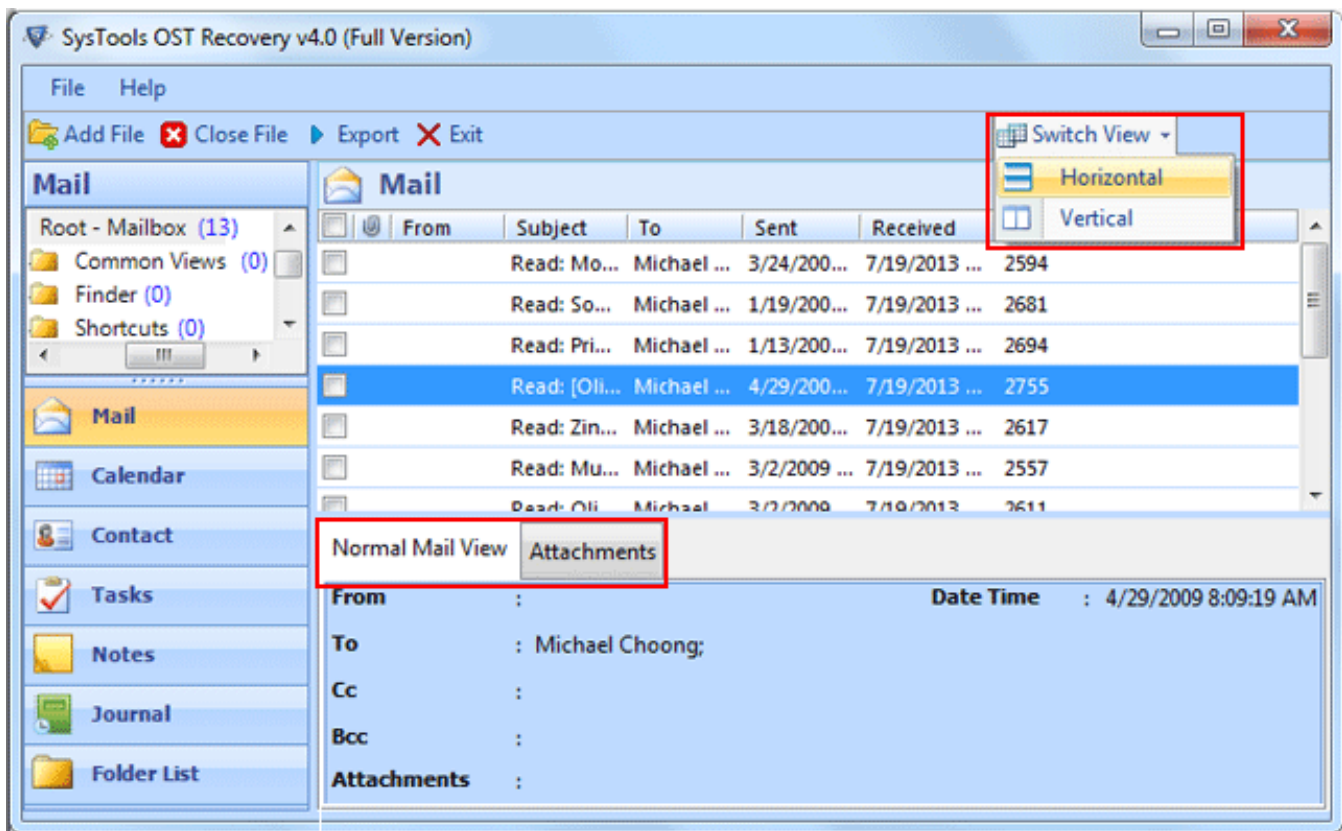


After loading OST file, confirming the scan mode, select the option to **Add File**, so that the scanning of the selected OST file will be started.

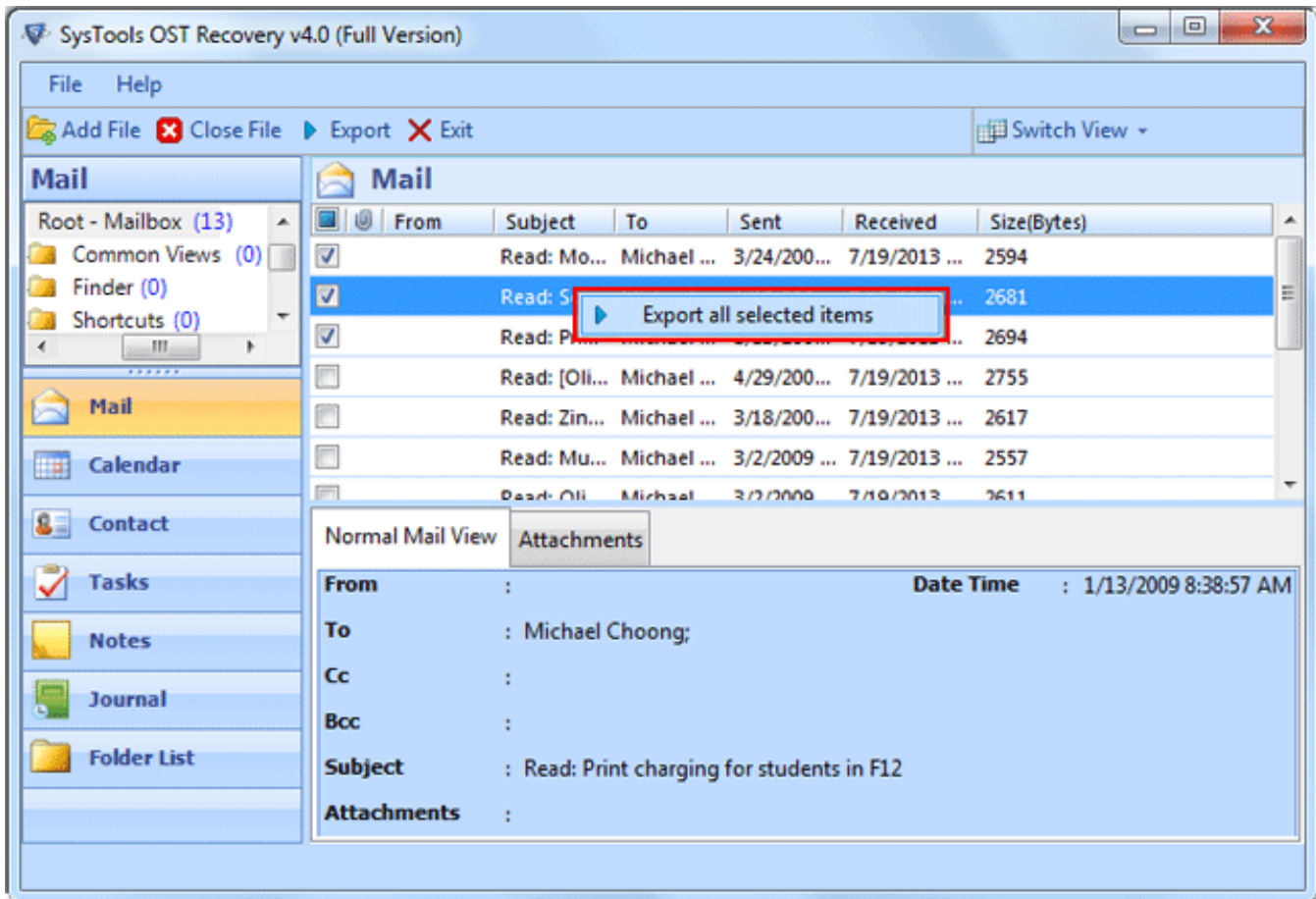
- Get confirmation message of successful OST file scanning after tool completes the process of OST scanning. Click **OK**:



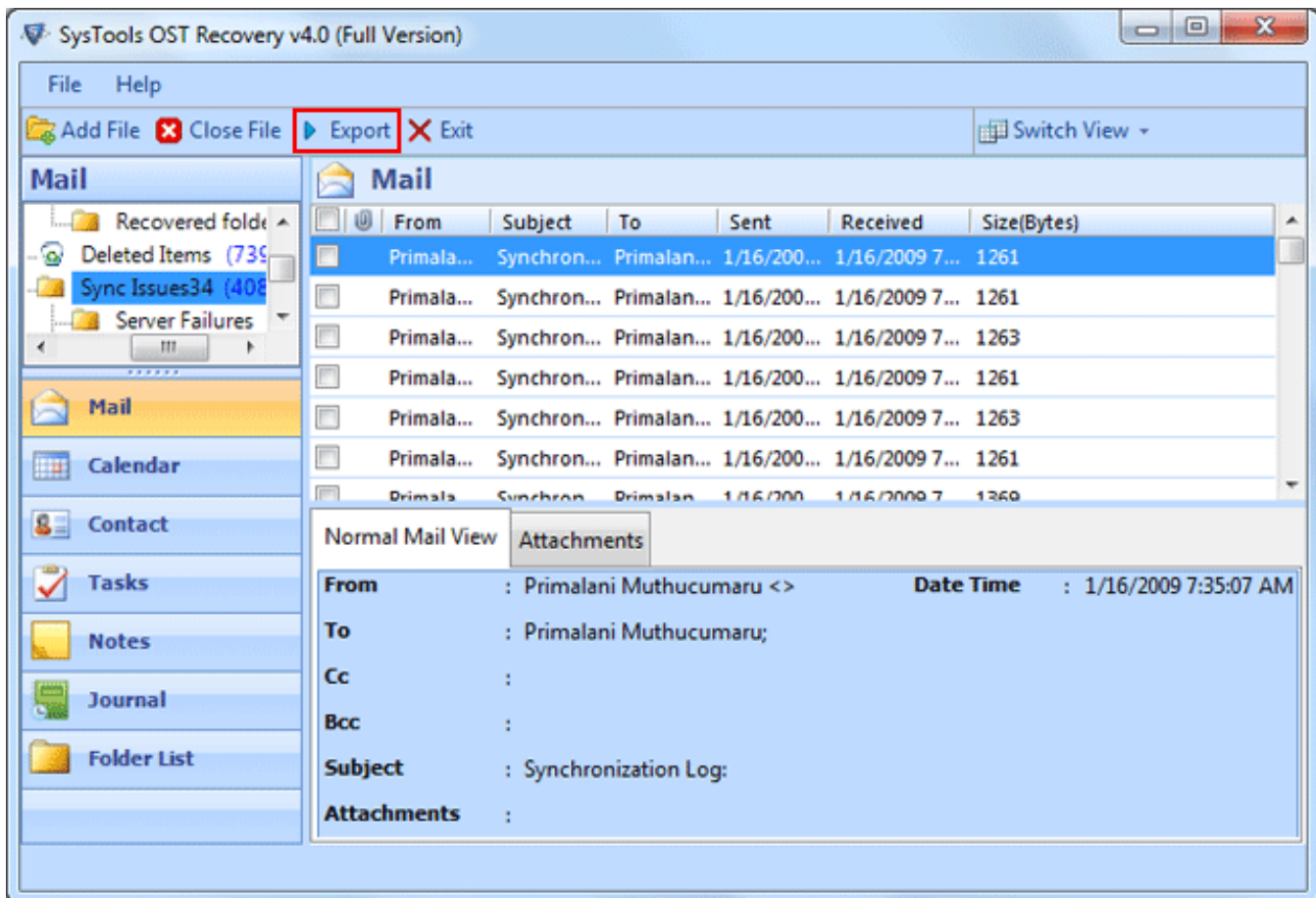
- Preview of OST file can be verified in two pattern of view, **Horizontal** or **Vertical**. By default the screen shows the **Horizontal View** of mail. View the files that are scanned and repaired for confirmation.



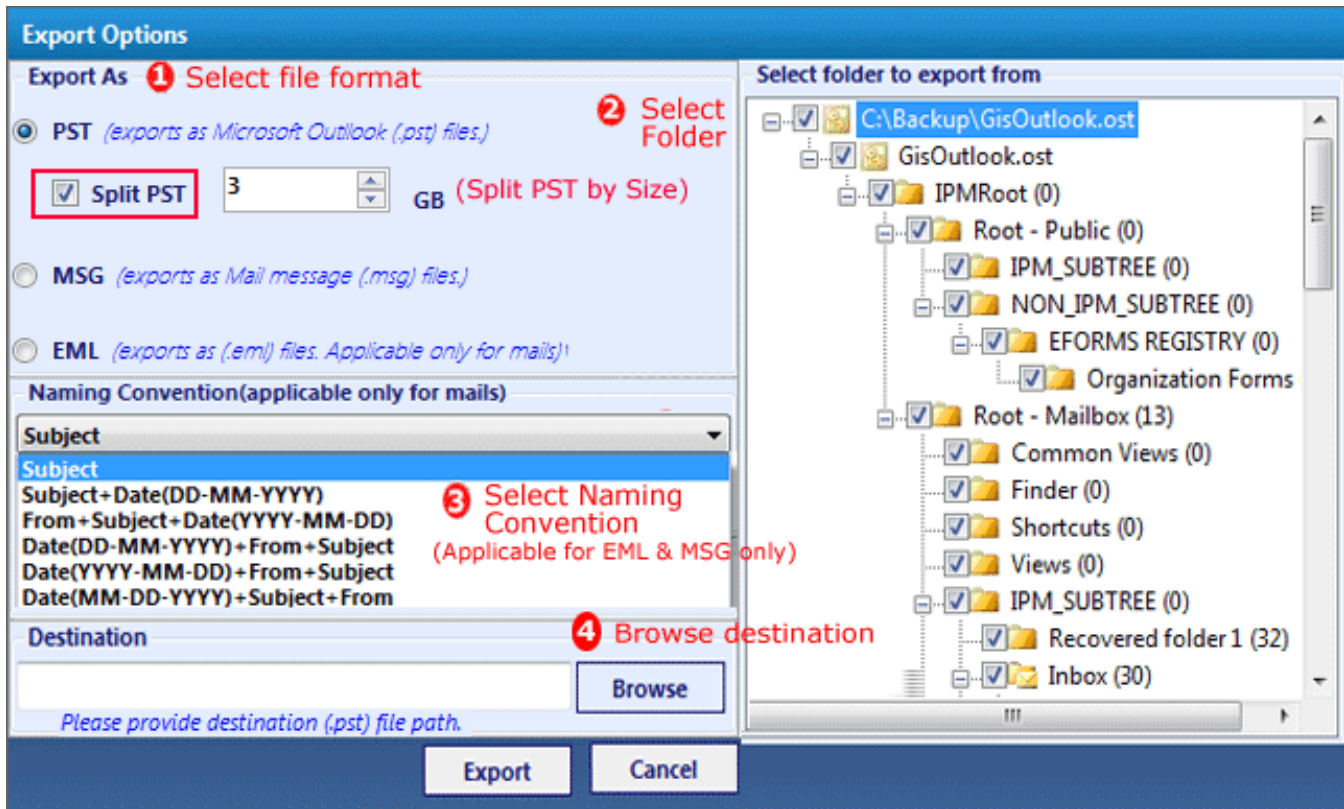
- Select the needed emails or other data that is to be extracted to the selected file format. Select the data, right click on it, get the option to **Export all selected items**:



- In case if you want entire OST file extraction to PST then click on the option **Export** from the screen as shown below:



- Conclude the Export OST file process by filling the needed credentials as. Follow the steps given in UI:

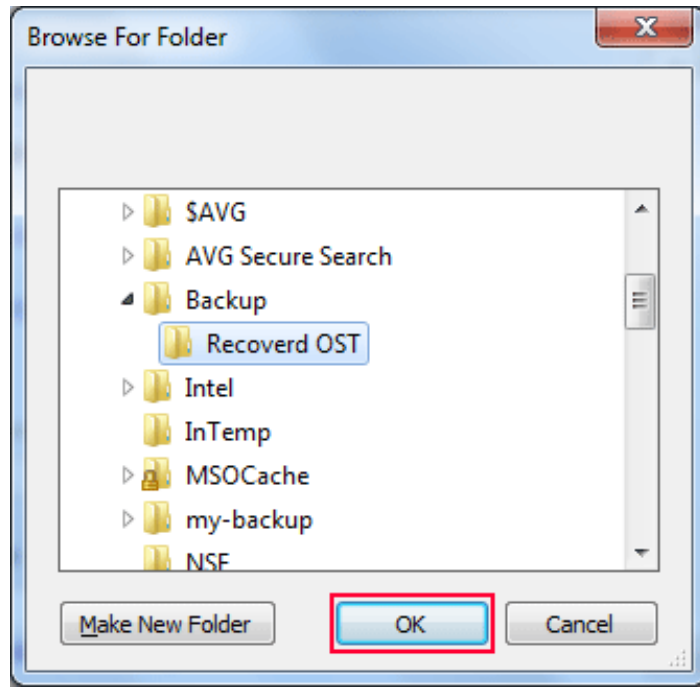


To accomplish it follow the steps:

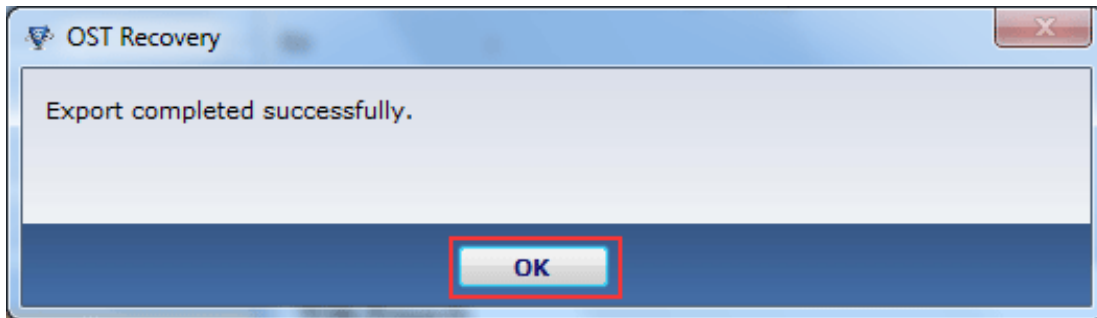
- Select destination file format from options as PST, MSG and EML
- **Split PST**: This option applies for only Outlook PST file, which can break large PST into smaller size.
- Select folder to export from
- Decide naming convention for the OST emails that are converted to MSG or EML

Important Note: The Naming conventions are only applicable for EML & MSG file type.

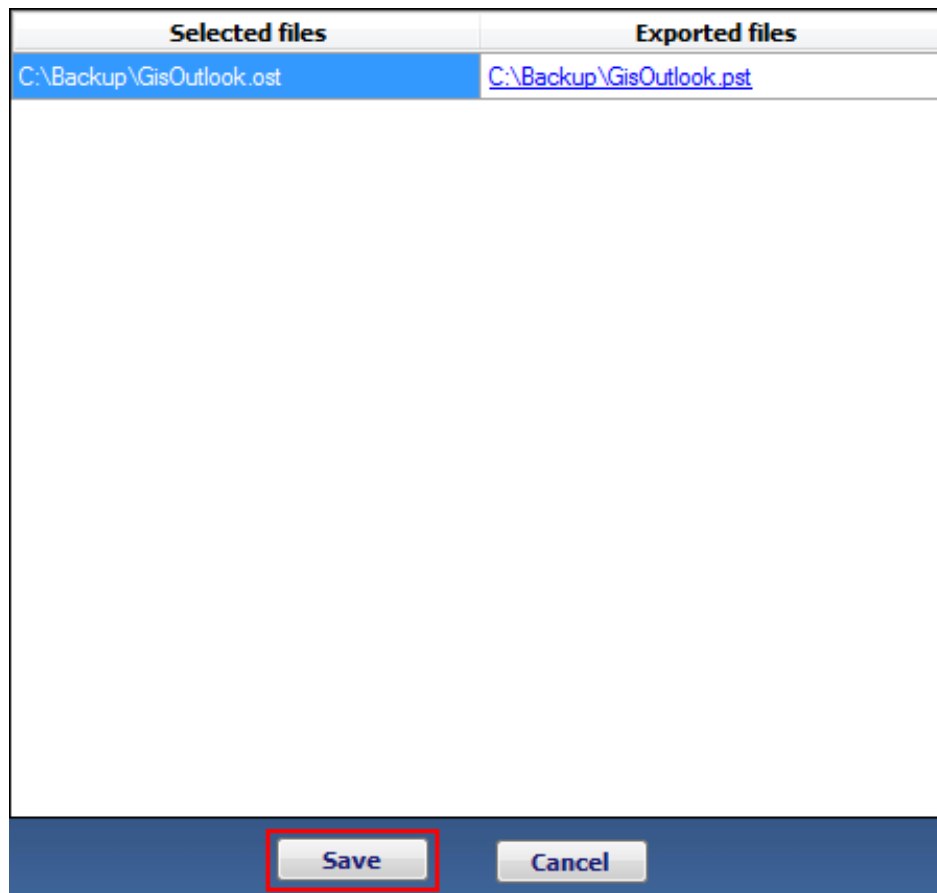
- Once all the credentials are browse the desired folder to save the PST file. Click **OK**:



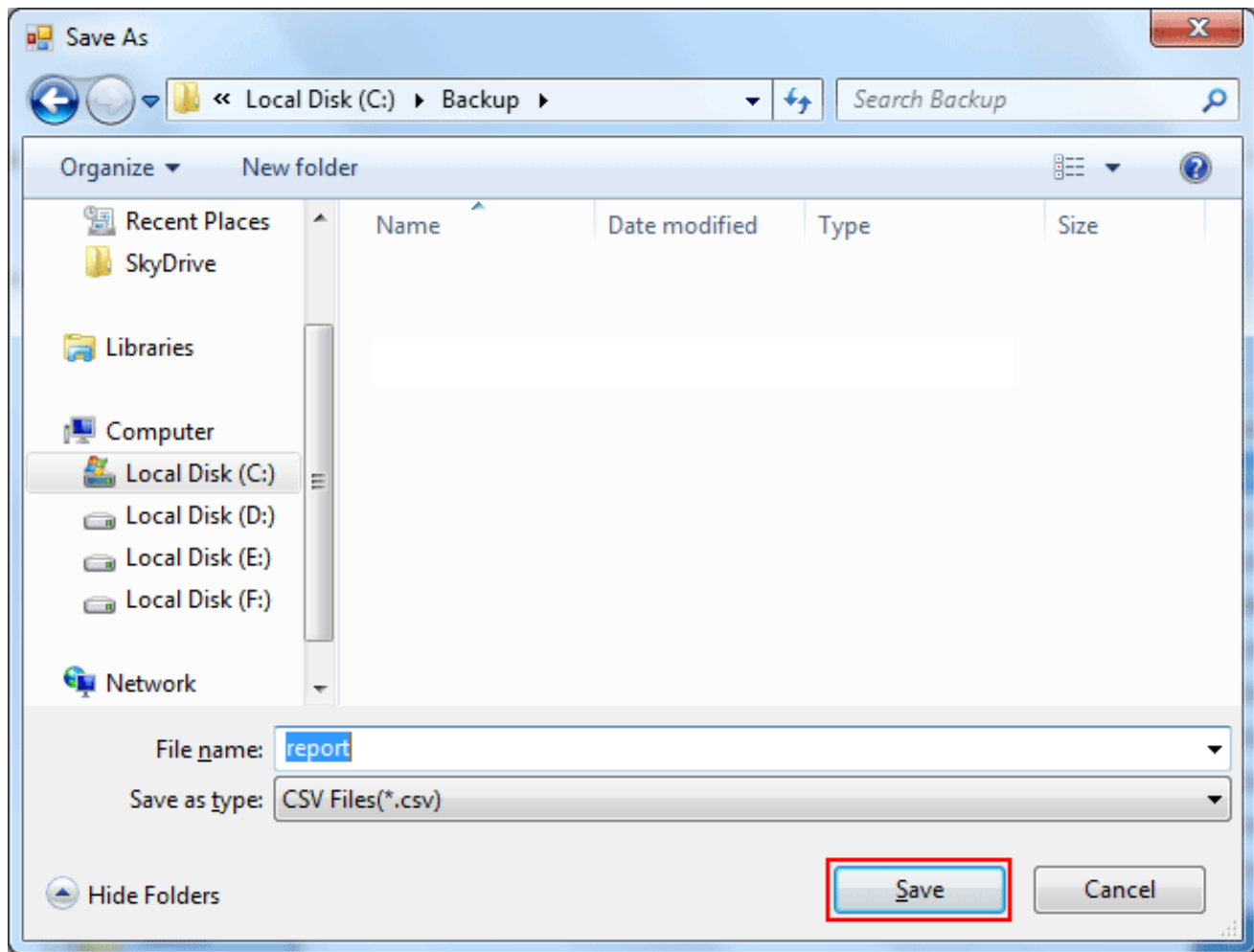
- Export confirmation message will be displayed that can be concluded by accepting the message **OK**:



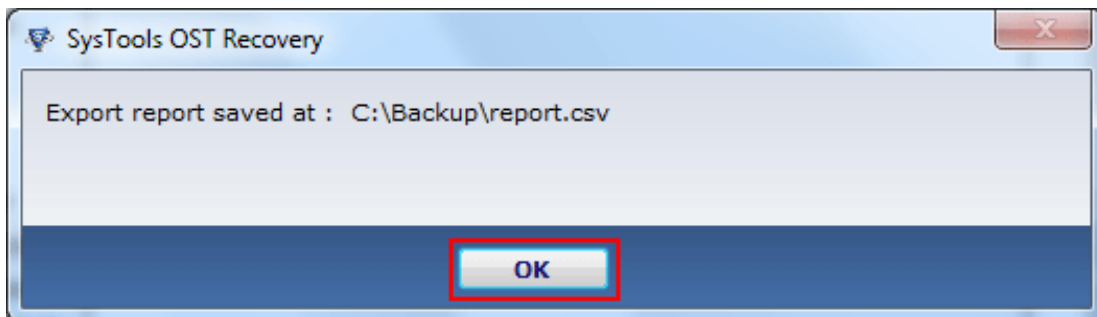
- After successful export the export report is generated. Click the **Save** button in order to save the report in your machine:



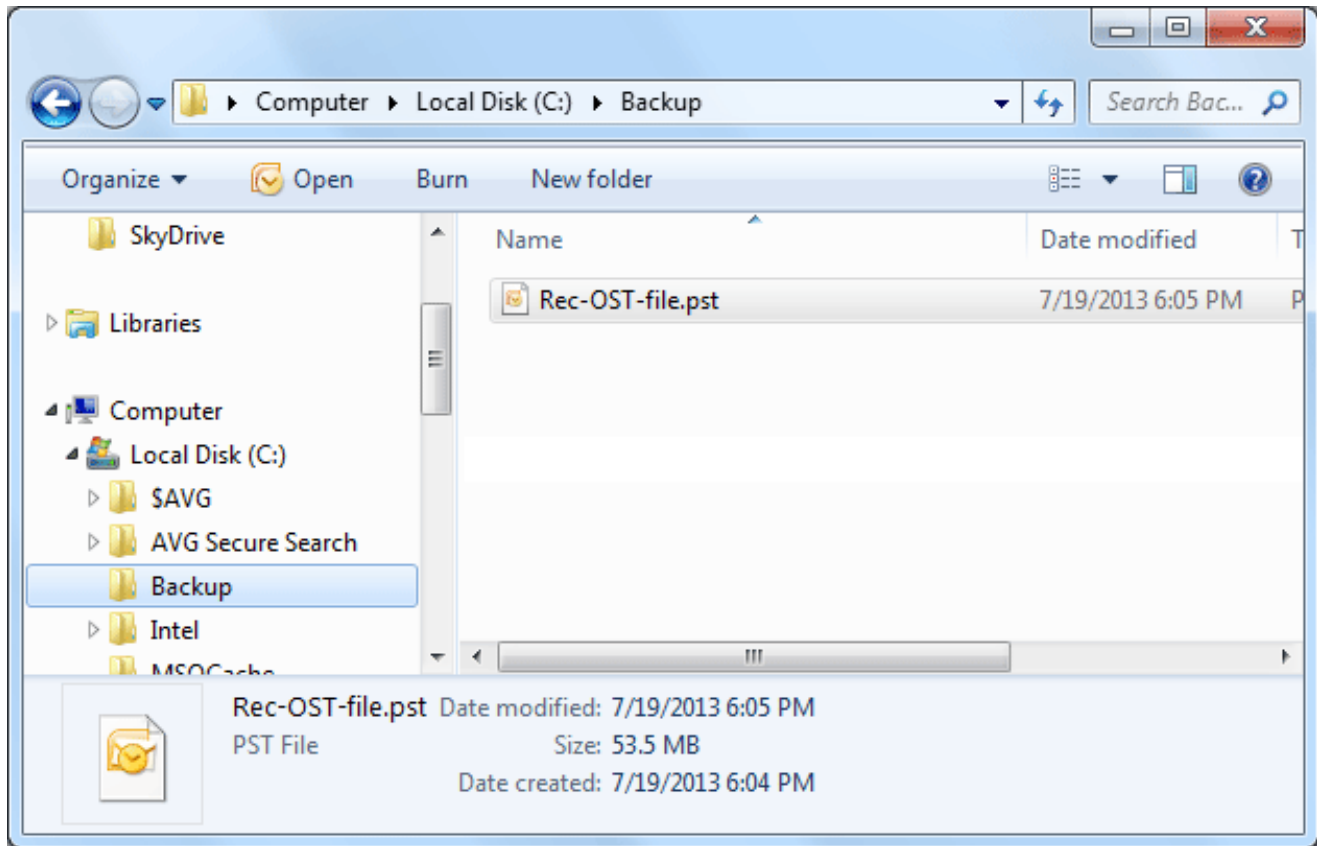
- Give the name for the conversion report you want to save. It is saved in **CSV** format in your machine. Click **Save**:



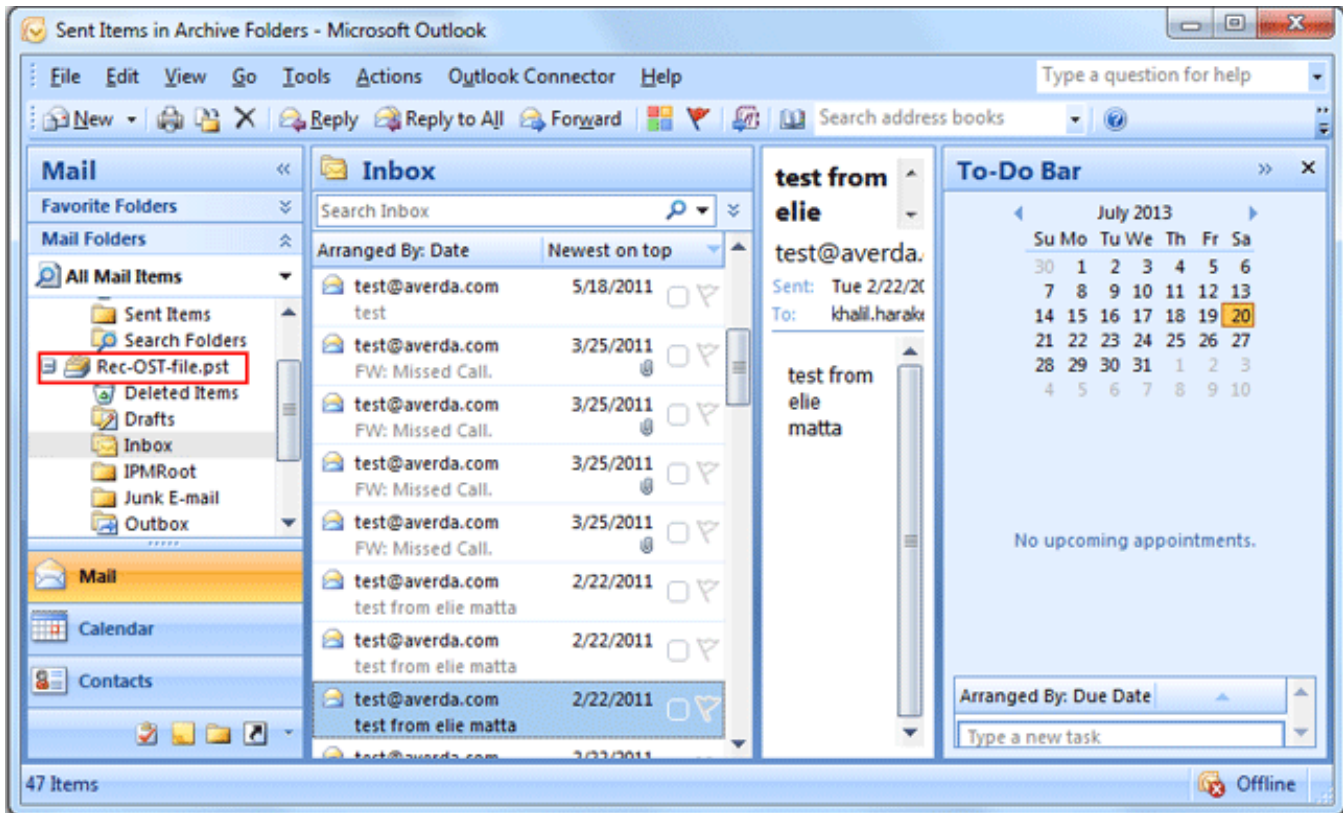
- The confirmation message pop up which show the successful saving of CSV report with its complete path. Click **OK**:



- Check the recovered data from the location where the file is stored. Emails and other supported items can be viewed in the location without any trouble after successful OST data conversion is carried out using the SysTools OST Recovery tool:



- Import the recovered PST file to Microsoft Outlook and once it is opened it will look like the below mentioned screen:



Go to Top



Frequently Asked Questions

- What is OST file and when does OST file created on Exchange Server?
- What is the location of OST files?

What is OST file and when does OST file created on Exchange Server?

An OST file (.ost) is an offline folder file in Microsoft Outlook. Offline folders make it possible for the user to work offline and then to synchronize changes with the Exchange server the next time they connect. Outlook Data Files (.ost) are created when you have an Exchange account and want to work offline or use the default **Cached Exchange Mode (Cached Exchange Mode: A copy of your Exchange Server account mailbox is saved on your computer in an offline Outlook Data File (.ost). This copy provides quick access to data, including when you work offline, and is synchronized with the mail server.)**. Outlook Data Files (.ost) are always copies of items that are saved on a mail server and don't have to be backed up like Outlook Data Files (.pst).

What is the location of OST files?

The path of OST files varies according to the versions of Windows® Operating System like.

- The location for **Window 7** and **Window Vista** is: **My Computer » Drive(C:) » Users » user » AppData » Local » Microsoft » Outlook;**
- The location for **Window XP** is: **Drive(C:) » Documents and Settings » user » Local Settings » Application Data » Microsoft » Outlook;**



Software comes free in evaluations to procure its functionality first, further inducing you for its licensed purchase. All the same, avail **24x7** online chat assistance facilities, direct from the benches of technical support team.

More to Come

- [Free Demo](#)
- [Purchase](#)
- [Support](#)



The SysTools OST Recovery software comes with a free of cost demo version that allows the users to recover the corrupted OST database and preview the items, but restriction is made to save the retrieved items. So it is advised to work on free OST Recovery and get preview of data recovered be analyzed & move for the purchase of full version.

SysTools Official Site to download demo from: <http://www.systoolsgroup.com/ost-recovery.html>



Getting done with demo further induces you towards full software purchase. Merchandise your best bargain as software licenses are distributed in three many categories.

- Personal License
- Business License
- Enterprise License

SysTools Official Page where you begin your Purchase from: <http://www.systoolsgroup.com/ost-recovery/order-now.html>

Personal License:

Personal license is restricted towards single machine run for individual usage of software. User is not permitted to distribute or recreates the software copy without prior permission of SysTools abandoning which makes user liable for strict judicial actions.

Business License:

Business License of software permits user to deploy software copy over its enterprise however constraint to single geographical location of enterprise, say a branch. Any offshore export of software copy is illegal and such actions are liable for serious legal action against those who abandons it.

Enterprise License:

Enterprise License lax users from offshore constraints as applied in business license of software usage. Users can free deploy the software over all of their enterprise channels however still not free to redistribute it out from enterprise domain.



Avail Online Support on SysTools OST Recovery

Ask your queries related to OST Recovery direct to our software support team available **24x7** at your service. Get comprehensive online chat ancillaries upon software and other platform interoperability related issues free.

Chat Support: <http://messenger.providesupport.com/messenger/evan.html>

Visit online FAQs or switch to software help manual for primary assistance on software functioning before leveraging technical support.

Online Help: <http://www.systoolsfaqs.com>

Visit Our Website: <http://www.systoolsgroup.com>

SysTools Knowledgebase: <http://www.systoolskb.com/>

Email Support

For Sales: sales@systoolsgroup.com

For Support: support@systoolsgroup.com



SysTools OST Recovery Software, accompanied user manual and documentation are copyright of SysTools Software, with all rights reserved. under the copyright laws, this user manual cannot be reproduced in any form without the prior written permission of SysTools Software. No Patent Liability is assumed, however, with respect to the use of the information contained here in.

© SysTools Software. All rights reserved.



SysTools OST Recovery™ is a copyright work of SysTools Software.



NOTICE TO USERS:

This End User License Agreement (the "Agreement") is a legally binding agreement between you (either an individual or an entity, the "User"), and CoreDataTree Technology Private Limited regarding the SysTools product (the "Software" or the "Program"), and all successor upgrades, revisions, patches, fixes, modifications, copies, additions or maintenance releases of the Software, if any, licensed to you by SysTools (collectively, the "Updates"), and related user documentation and explanatory materials or files provided in written, "online" or electronic form (the "Documentation" and together with the Software and Updates, the "PRODUCT" or the "Distribution Package").

CAREFULLY READ THE FOLLOWING LEGAL AGREEMENT. USE OF THE PRODUCT PROVIDED WITH THIS AGREEMENT CONSTITUTES YOUR ACCEPTANCE OF THESE TERMS. IF YOU DO NOT AGREE TO THE TERMS OF THIS AGREEMENT, DO NOT INSTALL AND/OR USE THE PRODUCT. YOUR USE OF THE PRODUCT IS CONDITIONED UPON COMPLIANCE WITH THE TERMS OF THIS AGREEMENT.

Accepting the Terms

In order to use the SYSTOOLS SOFTWARE PRODUCT (referred as Software or Product below), you must first agree to the Terms. You may not use the PRODUCT if you do not accept the Terms. You can accept the Terms by:

- Clicking to accept or agree to the Terms, where this option is made available to you by SYSTOOLS SOFTWARE in the user interface for any PRODUCT; or
- By actually using the PRODUCT. In this case, you understand and agree that SYSTOOLS SOFTWARE will treat your use of the PRODUCT as acceptance of the Terms from that point onwards.

Intellectual property rights

The PRODUCT is owned and copyrighted by SysTools.

The PRODUCT and any documentation included in the distribution package are protected by national copyright laws and international treaties. Any unauthorized use of the PRODUCT shall result in immediate and automatic termination of this license and may result in criminal and/or civil prosecution.

Your possession, installation or use of the PRODUCT does not transfer to you any title to the

intellectual property in the PRODUCT, and you will not acquire any rights in the PRODUCT except as expressly set forth in this Agreement.

Unless you have agreed otherwise in writing with SYSTOOLS SOFTWARE, nothing in the Terms gives you a right to use any of SYSTOOLS SOFTWARE trade names, trade marks, product marks, logos, domain names, and other distinctive brand features.

You agree that you shall not remove, obscure, or alter any proprietary rights notices (including copyright and trade mark notices) which may be affixed to or contained within the PRODUCT.

Scope of the License

SYSTOOLS SOFTWARE gives you a personal, worldwide, royalty-free, non-assignable and non-exclusive license to use the software provided to you by CoreDataTree Technology Private Limited as part of the Software as provided to you by CoreDataTree Technology Private Limited. This license is for the sole purpose of enabling you to use and enjoy the benefit of the software as provided by CoreDataTree Technology Private Limited, in the manner permitted by the Terms.

With the personal license, you can use the PRODUCT as set forth in the Agreement for non-commercial purposes in non-business, non-commercial environment.

To use the PRODUCT in a corporate, government or business environment, you should purchase a business license.

If you acquired the Site\Enterprise license, you may use the PRODUCT on unlimited number of computers within one office in one geographic location.

The registered Software may not be rented or leased, but may be permanently transferred together with the accompanying documentation, if the person receiving it agrees to terms of this license. If the software is an update, the transfer must include the update and all previous versions.

You may not create any copy of the PRODUCT. You can make one (1) copy the PRODUCT for backup and archival purposes, provided, however, that the original and each copy is kept in your possession or control, and that your use of the PRODUCT does not exceed that which is allowed in this Agreement. If you permanently transfer the PRODUCT you shall delete all its copies that are in your possession and send SysTools a notice thereof.

The Software unregistered (trial/demo) version may be freely distributed provided that the distribution package is not modified. No person or company may charge a fee for the distribution of the PRODUCT without written permission from the copyright holder.

You agree not modify, decompile, disassemble, otherwise reverse engineer the licensed Program, unless such activity is expressly permitted by applicable law.

Registration Code/Full Version Link

Registration code - a unique identification file provided to you by SysTools confirming the purchase of the license from CoreDataTree Technology Private Limited, which may carry the information about the license and enable the full functionality of the Program in accordance with the Agreement.

The Registration Code provided to you by CoreDataTree Technology Private Limited constitutes confidential proprietary information of CoreDataTree Technology Private Limited. For purposes hereof, you agree not to transfer, copy, disclose, provide or otherwise make available such confidential information in any form to any third party without the prior written consent of CoreDataTree Technology Private Limited. You agree to implement reasonable security measures to protect such confidential information provided to you by CoreDataTree Technology Private Limited.

In case where the registration code is not provided and link to full version is provided. The link to full version provided to you by CoreDataTree Technology Private Limited constitutes confidential proprietary information of CoreDataTree Technology Private Limited. For purposes hereof, you agree not to transfer, copy, disclose, provide or otherwise make available such confidential information in any form to any third party without the prior written consent of CoreDataTree Technology Private Limited. You agree to implement reasonable security measures to protect such confidential information provided to you by CoreDataTree Technology Private Limited.

Limited Warranties

CoreDataTree Technology Private Limited DOES NOT WARRANT THAT THE SOFTWARE IS FIT FOR ANY PARTICULAR PURPOSE. CoreDataTree Technology Private Limited DISCLAIMS ALL OTHER WARRANTIES WITH RESPECT TO THE SOFTWARE, EITHER EXPRESS OR IMPLIED. SOME JURISDICTIONS DO NOT ALLOW THE EXCLUSION OF IMPLIED WARRANTIES OR LIMITATIONS ON HOW LONG AN IMPLIED WARRANTY MAY LAST, SO THE ABOVE LIMITATIONS OR EXCLUSIONS MAY NOT APPLY TO YOU.

Legality statement (applicable to password recovery programs only)

The program that is licensed to you is absolutely legal and you can use it provided that you are the legal owner of all files or data you are going to recover through the use of our software or have permission from the legitimate owner to perform these acts. Any illegal use of our software will be solely your responsibility. Accordingly, you affirm that you have the legal right to access all data, information and files that have been hidden.

You further attest that the recovered data, passwords and/or files will not be used for any illegal purpose. Be aware password recovery and the subsequent data decryption of unauthorized or otherwise illegally obtained files may constitute theft or another wrongful action and may result in your civil and (or) criminal prosecution.

Final provisions

All rights not expressly granted here are reserved by CoreDataTree Technology Private Limited.



The software available for downloading through Internet sites and published by SysTools (the "Software") is provided pursuant to this license agreement. SysTools Software encourages you to know the possible risks involved in the download and use of the Software from the internet. You are solely responsible for protecting yourself, your data, your systems and your hardware used in connection with this software. SysTools shall not be liable for any damages suffered from the use of the Software.

BY USING THIS SOFTWARE, YOU EXPRESSLY AGREE THAT ALL RISKS ASSOCIATED WITH THE PERFORMANCE AND QUALITY OF THE SOFTWARE IS ASSUMED SOLELY BY YOU. SYSTOOLS SHALL NOT BE LIABLE FOR ANY DIRECT, INDIRECT, INCIDENTAL, SPECIAL OR CONSEQUENTIAL DAMAGES ARISING OUT OF THE USE OF OR INABILITY TO USE THE SOFTWARE, EVEN IF SYSTOOLS HAS BEEN ADVISED OF THE POSSIBILITY OF SUCH DAMAGES. THE SOFTWARE IS MADE AVAILABLE BY SYSTOOLS "AS IS" AND "WITH ALL FAULTS". SYSTOOLS DOES NOT MAKE ANY REPRESENTATIONS OR WARRANTIES OF ANY KIND, EITHER EXPRESS OR IMPLIED, CONCERNING THE QUALITY, SAFETY OR SUITABILITY OF THE SOFTWARE, INCLUDING WITHOUT LIMITATION ANY IMPLIED WARRANTIES OF MERCHANTABILITY, FITNESS FOR A PARTICULAR PURPOSE, OR NON-INFRINGEMENT. FURTHER, SYSTOOLS MAKES NO REPRESENTATIONS OR WARRANTIES AS TO THE TRUTH, ACCURACY OR COMPLETENESS OF ANY INFORMATION, STATEMENTS OR MATERIALS CONCERNING THE SOFTWARE THAT IS CONTAINED IN SYSTOOLS SOFTWARE DOWNLOAD SITE. IN NO EVENT WILL SYSTOOLS BE LIABLE FOR ANY INDIRECT, PUNITIVE, SPECIAL, INCIDENTAL OR CONSEQUENTIAL DAMAGES HOWEVER THEY MAY ARISE AND EVEN IF SYSTOOLS HAS BEEN PREVIOUSLY ADVISED OF THE POSSIBILITY OF SUCH DAMAGES.

